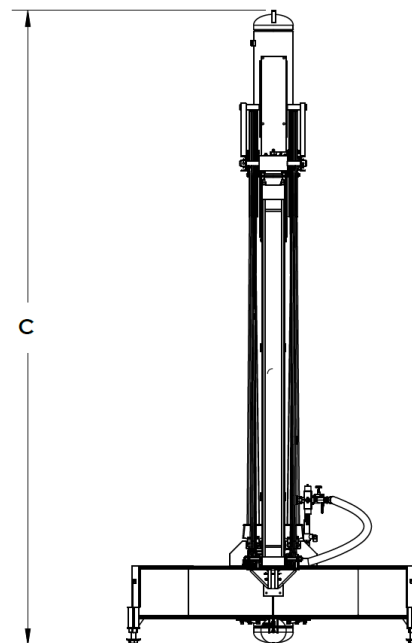
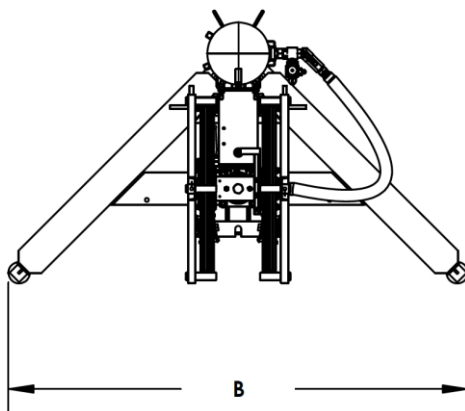
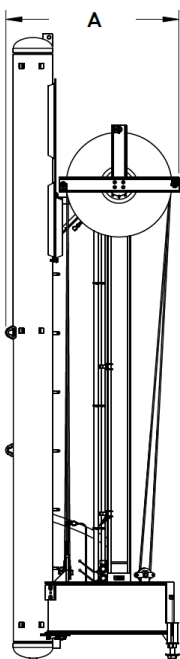


## SSi Hydraulic Pumping Unit



SSi Artificial Lift System offers five Pumping Unit models ranging from a Model 250, with 25,000 lbs. lift capacity and a 240" stroke to a Model 800, with 80,000 lbs. lift capacity and a 360" stroke. The Pumping Unit is comprised of a triple chamber hydraulic cylinder, a heavy duty yet compact structural base, a counterbalance vessel containing nitrogen gas under pressure, and a pulley/wire rope lift mechanism which doubles sucker rod stroke relative to cylinder travel. The counterbalance can be adjusted at the well simply by adjusting the pressure of the gas in the storage vessel. The direction and speed of the pump is then controlled by sending hydraulic fluid under pressure to either the up or the down chambers of the cylinder. Since the pump is PLC controlled, the speed and stroke limits can be independently established, thereby allowing for independent speeds for the up and down stroke.

### Specifications

<b>Polished Rod to Cylinder Speed Ratio:</b>	<b>2 to 1</b>
<b>Maximum Nitrogen Pressure:</b>	<b>1000 psi</b>
<b>Compatible with all HP Unit Sizes</b>	<b>Yes</b>
<b>Minimum Operating Temperature:</b>	<b>-40 °C</b>
<b>Maximum Operating Temperature:</b>	<b>50 °C</b>

### Specifications by Pumping Unit Model

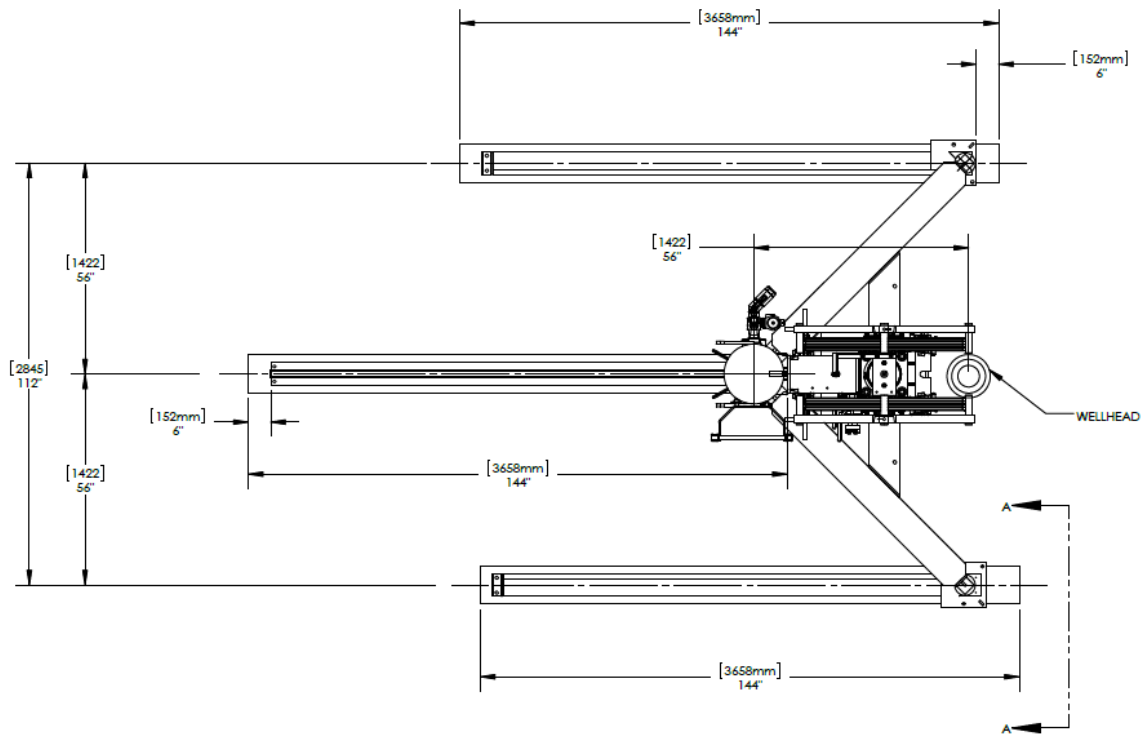
Model	Lifting Capacity	Weight	A	B	C
250	25,000 lbs	6,900 lbs	70.02"	118.28"	255.53"
400	40,000 lbs	8,080 lbs	70.12"	118.28"	280.97"
400 LS	40,000 lbs	16,500 lbs	78.54"	132.37"	493.78"
600	60,000 lbs	18,590 lbs	78.53"	132.37"	493.78"
800	80,000 lbs	21,000 lbs	96.72"	132.37"	493.66"

#### Important Notice

This datasheet contains typical information specific to products manufactured at the time of its publication.  
©SSi Lift CDA (2019) Ltd - Contents herein do not constitute a warranty.

## Installation Layouts

### Model 250 and 400 Pumping Units



### Model 400LS, 600, and 800 Pumping Units

